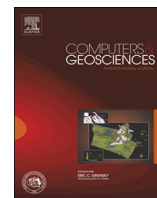




ELSEVIER

Contents lists available at [ScienceDirect](#)

Computers & Geosciences

journal homepage: www.elsevier.com/locate/cageo

Erratum

Erratum to “3D hydro-mechanically coupled groundwater flow modelling of Pleistocene glaciation effects” [Comput. Geosci. 67 (2014) 89–99]



Wolfram R uhaak^{a,*}, Victor F. Bense^b, Ingo Sass^a

^a Technische Universit at Darmstadt, Institute of Applied Geosciences, Department of Geothermal Science and Technology, Germany

^b School of Environmental Sciences, University of East Anglia, Norwich NR4 7TJ, England, UK

The publisher regrets that the following three errors exist in the article. Eq. (14) was printed incorrectly, as the symbol for the loading efficiency misses. The correct equation is

$$\nabla \mathbf{q} = S_s \left(\frac{dh}{dt} - \zeta \frac{dL}{dt} \right) \quad (14)$$

The correct symbol for the loading efficiency is ζ . At some places in the text instead of ζ the symbol ξ is wrongly used (Eq. (16), Eq. (17) and Table 4).

In Fig. 4 the z-axis is printed incorrectly, a corrected version is shown below. In Fig. 11 the z-axis is printed incorrectly, a corrected version is shown below. The publisher would like to apologise for any inconvenience caused.

DOI of original article: <http://dx.doi.org/10.1016/j.cageo.2014.03.001>

* Corresponding author.

E-mail addresses: ruehaak@geo.tu-darmstadt.de, w.ruehaak@online.de (W. R uhaak).

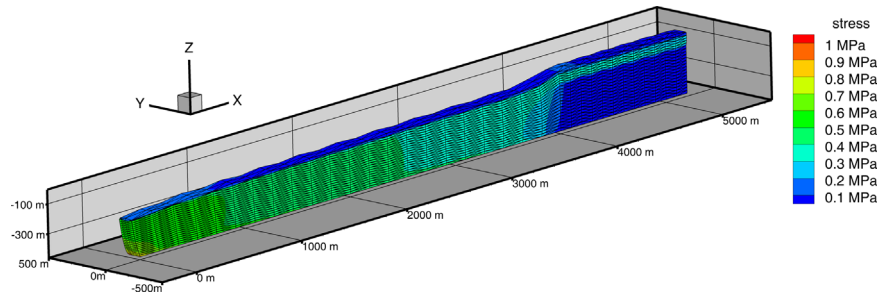


Fig. 4. The deformed mesh (displacement is 500 times exaggerated).

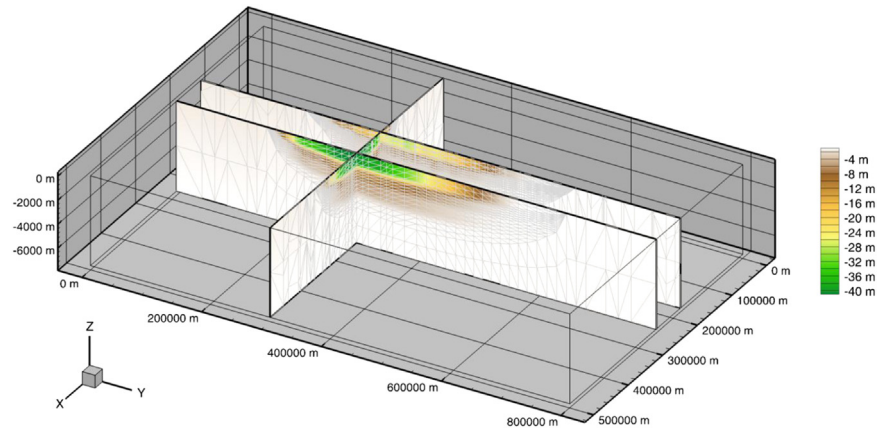


Fig. 11. Vertical displacement after ten thousand years. (View is 20 times exaggerated).